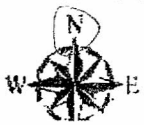
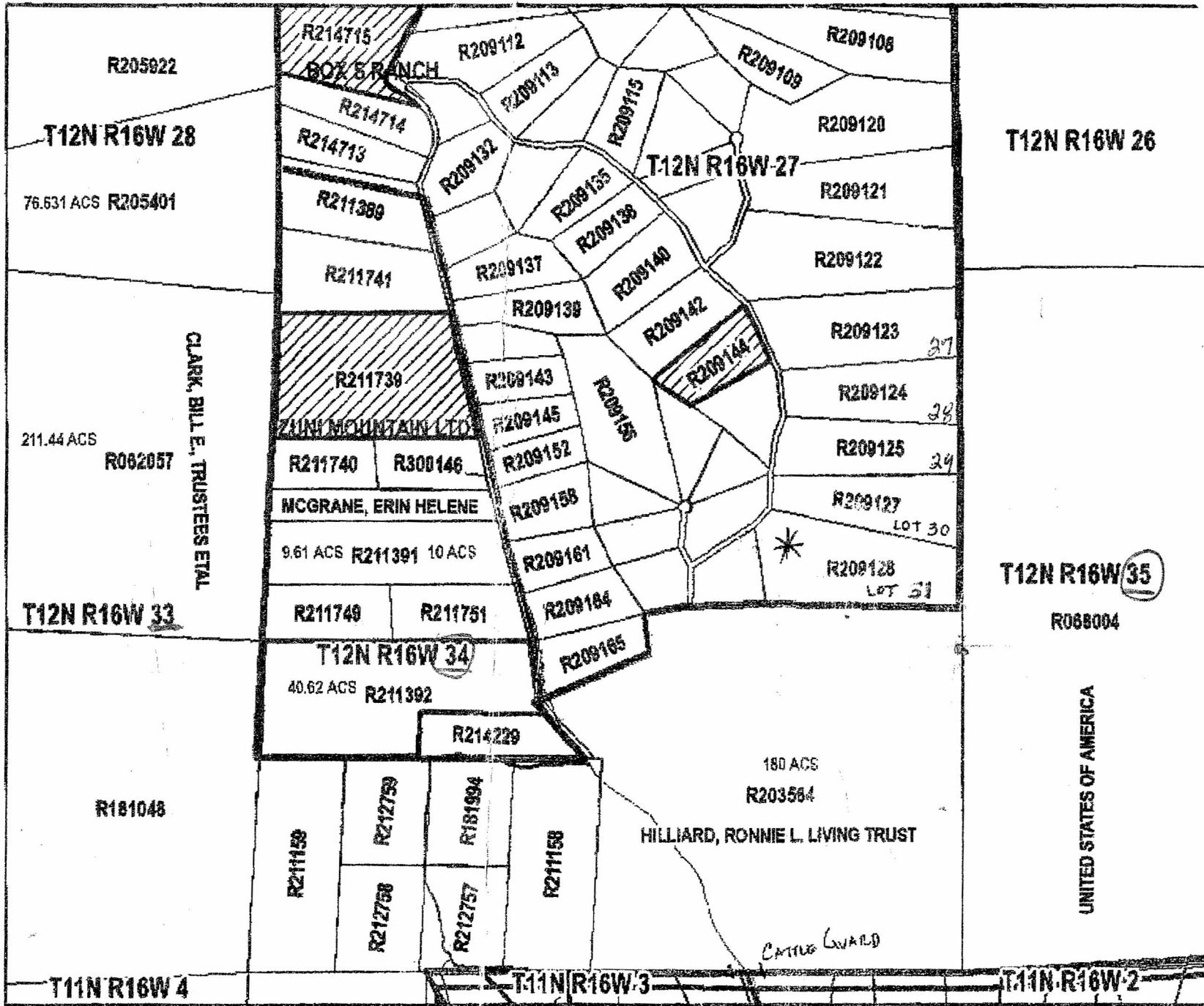




**Legend**

- Mile Marker
- POLITICAL BOUNDARY**
- Fort Wingate
- City of Gallup
- Indian Reservation
- McKinley County
- PLSS LINE
- ROADS TYPE**
- Federal/State Road
- County Road
- Navajo BIA Road
- Private or Non-Maintained Road
- On/Off Ramp
- Maintenance - Other
- Indian Reservation**
- Zuni Reservation
- Navajo Reservation
- Fort Wingate
- SUBD-Lines
- NHB-Lines
- Lot Code
- SALDO Info**
- ▨ 2002
- ▩ 2003
- ▧ 2004
- ▦ 2005
- RA Numbers
- Driveways



0 225,450.675 Feet  
 1 inch equals 1,075.325 feet

DISCLAIMER: This map is for location purposes only.



McKinley County, N

UNITED STATES OF AMERICA